

LANTRONIX[®]
CONNECT SMART. DO MORE.™

IT Infrastructure
Solutions

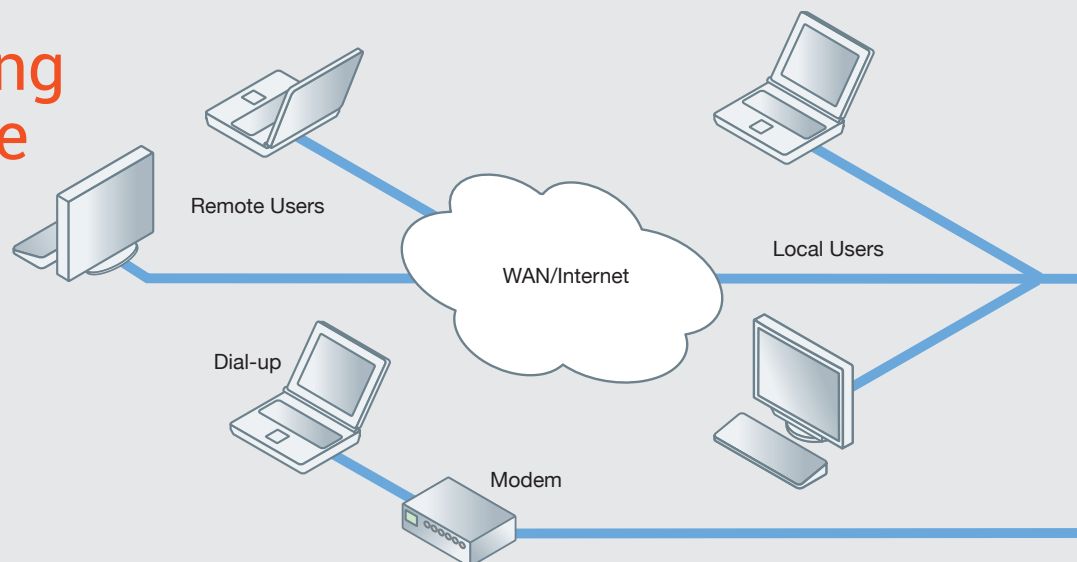
ENABLING SECURE OUT-OF-BAND MANAGEMENT



Out-of-Band IT Infrastructure Management...

- Enables data centers and test labs to manage network and IT assets from virtually anywhere over a wired or wireless connection
- Ensures uptime by allowing for quick troubleshooting and repairing of servers and IT equipment at any time
- Delivers true out-of-band management of the enterprise data center with everything from configuring servers, to repairing IT equipment, to controlling power—even when the network is down
- Minimizes operating costs by consolidating data and system management operations
- Saves space and eliminates the need for a separate keyboard, video monitor and mouse for each computer

Manage **anything**
from **anywhere**
at **any time**



Contents

IT/Data Center Management

Lantronix® SLC™ 8000 <i>Advanced Modular Console Manager</i>	pages 4-5
Lantronix Spider® and Spider Duo® <i>Remote KVM-over-IP with Local Access</i>	pages 10-11
Lantronix® vSLM™ <i>Secure Virtual Management Software</i>	pages 8-9

Distributed IT/ Branch Office Management

Lantronix® SLB™ <i>Remote Branch Office Manager</i>	pages 6-7
---	-----------

Cellular/ Wi-Fi Out-of-Band Management

PremierWave® XC HSPA+ 3.5 G <i>Cellular Out-of-Band Management Intelligent Gateway</i>	page 12
SGX 5150 <i>Intelligent IoT Device Gateway Wi-Fi Out-of-Band Management Intelligent Gateway</i>	page 13

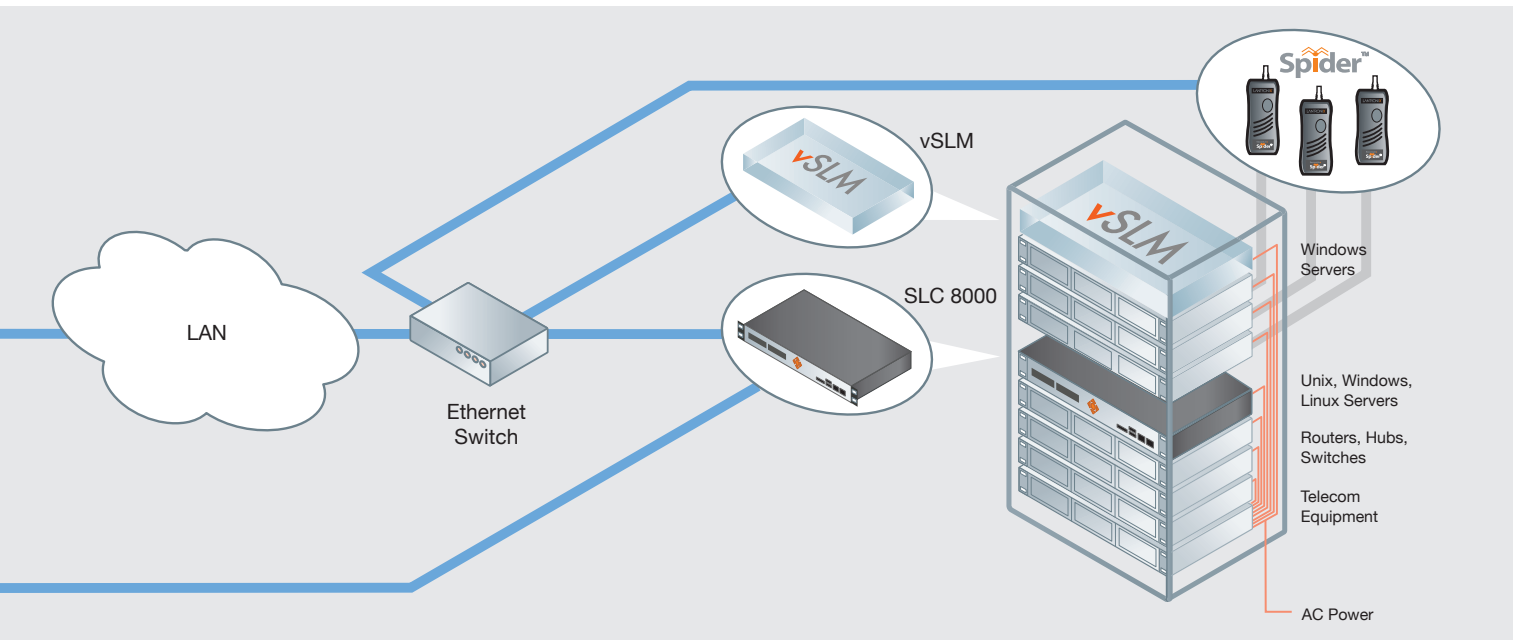
Remotely Monitor, Access and Manage IT Network Assets

Just like a person needs oxygen to breathe, your enterprise network is a vital part of making sure that your organization is operating optimally. Given the demands of today's business world, anything less than 24/7 reliability is considered a failure.

Featuring robust security, industry-leading scalable hardware, and intuitive management tools, our solutions are designed to make managing your IT infrastructure as easy as breathing. Lantronix's

innovative IT infrastructure solutions help people and organizations thrive by simplifying operations, optimizing staff and proactively addressing system failures to ensure infrastructure continuity.

That's why for more than 25 years, network and IT administrators around the world have chosen Lantronix to access, monitor and manage their enterprise networks anytime, anywhere.



Lantronix® SLC™ 8000 Advanced Console Manager

Future Proof Your Out-of-Band Management Solution



- Optimize network lab infrastructure with Device Under Test (DUT) automated tests and diagnostic data collection
- HTML 5 based remote console access
- Simplify device deployments with customizable modular chassis and user-swappable USB and RJ45 modules
- Reduce operating costs and security risks by eliminating the need for onsite interventions
- Quickly set-up and customize network using front keypad and LCD panel right out of the box
- 2 GbE (10/100/1000BT) ports on RJ45 or 2 SFP+Fiber/Copper port

The Lantronix® SLC™ 8000 advanced console manager is the industry's first modular unit that provides secure remote access to IT equipment with user-swappable RJ45 and high density USB port modules, allowing for easy, cost-effective upgrades and deployment in data center and test lab environments.

Most Compatible USB Solution

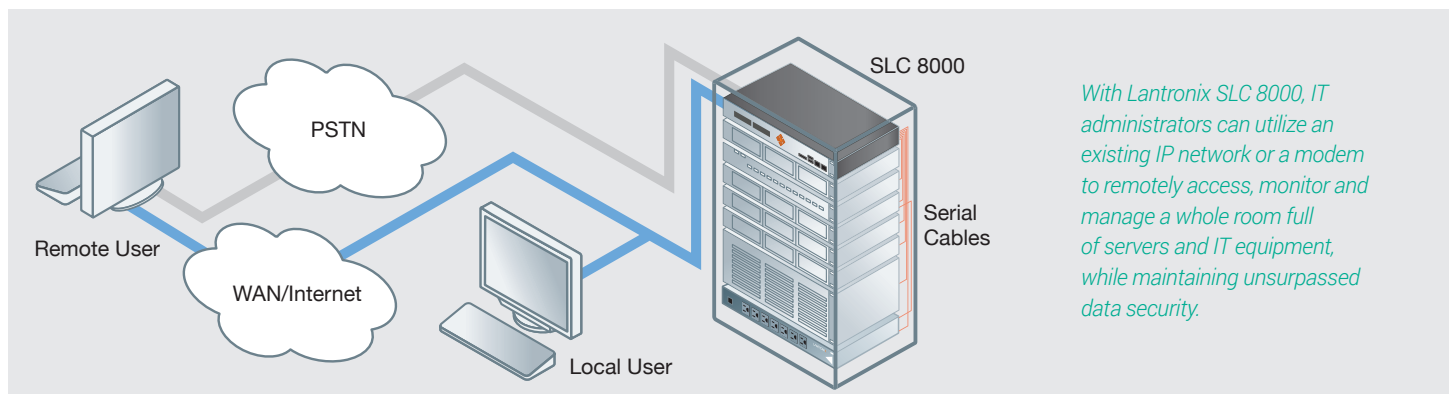
Designed to adapt to the changing needs of today's enterprise network, the dynamic SLC 8000 advanced console manager is the only appliance on the market that is compatible with Cisco, HPE, Brocade and other leading manufacturers' USB switches and routers. By leveraging the command line interface of most IT equipment, system engineers and administrators around the world can seamlessly reconfigure, reboot and reload firmware over an in-band or out-of-band connection for optimal data center performance.

Integrated Security

The SLC 8000 console manager's security features include web based SSL and SSH data encryption in addition to remote two-factor authentication for integration with existing systems. For added protection, the unit is shielded by NIST AES Encryption and firewall features to block ports or reject unauthorized connection attempts. Whether local or remote, authentication can be achieved via RADIUS, LDAP/AD, NIS, Kerberos, TACACS + and SSH keys. Real time event notifications expedite response times and special audit logging with automated logout records system activity to ensure compliance.

High Performance

The SLC 8000 console manager is ideal for today's enterprise data centers as well as collaborative environments such as test and development labs. With the ability to support up to 15 users per port simultaneously and 396 concurrent sessions per console at full line rate, the SLC 8000 unit delivers twice the performance compared to other appliances on the market.



With Lantronix SLC 8000, IT administrators can utilize an existing IP network or a modem to remotely access, monitor and manage a whole room full of servers and IT equipment, while maintaining unsurpassed data security.

Scalable & Flexible Modular Design

The unique modular design of the SLC 8000 minimizes capital expenditures by reducing the time to develop and deploy new management applications and services.

Integrating new devices with existing architectures is made easy with the SLC 8000 unit's field-replaceable modules. Simply add or swap modules to expand the number of device ports, upgrade from a single to a dual power supply, or introduce new interfaces such as SFP fiber.

The SLC 8000 console manager features automatic zero touch provisioning (ZTP), which allows the SLC 8000 to be automatically provisioned and configured during initial boot up from a DHCP server over the network. The SLC 8000 console copies the "golden" configuration template created by the user to all of the connected appliances per designated subnet and eliminates the need for manual intervention when configuring new devices on the network.



Field-replaceable port modules.

Key Features

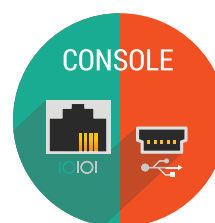
- Dual 10/100/1000 Base Ethernet connections
- Software reversible device port pins
- Modular device ports and power supply (single and dual AC or DC options)
- 8, 16, 32 and 48-port models
- Simple web management interface and CLI access
- Provides peak levels of encryption and security to ensure data assets are protected
- Front LCD and keypad allows for quick network setup and easy deployment
- Integrated power management with Server Technology PDU solutions
- Centralized management integration with Lantronix's available vSLM™ management software
- SNMP based remote power management supports 140+ UPS's and PDU's through network, serial and USB connections
- Automated response for fault conditions improves response time to equipment failures, reduced human error, minimizes mean time to repair (MTTR)

Available I/O Configurations

1. Pick a Baseline Configuration



2. Add Up to Two Modules



Products, Options, Accessories

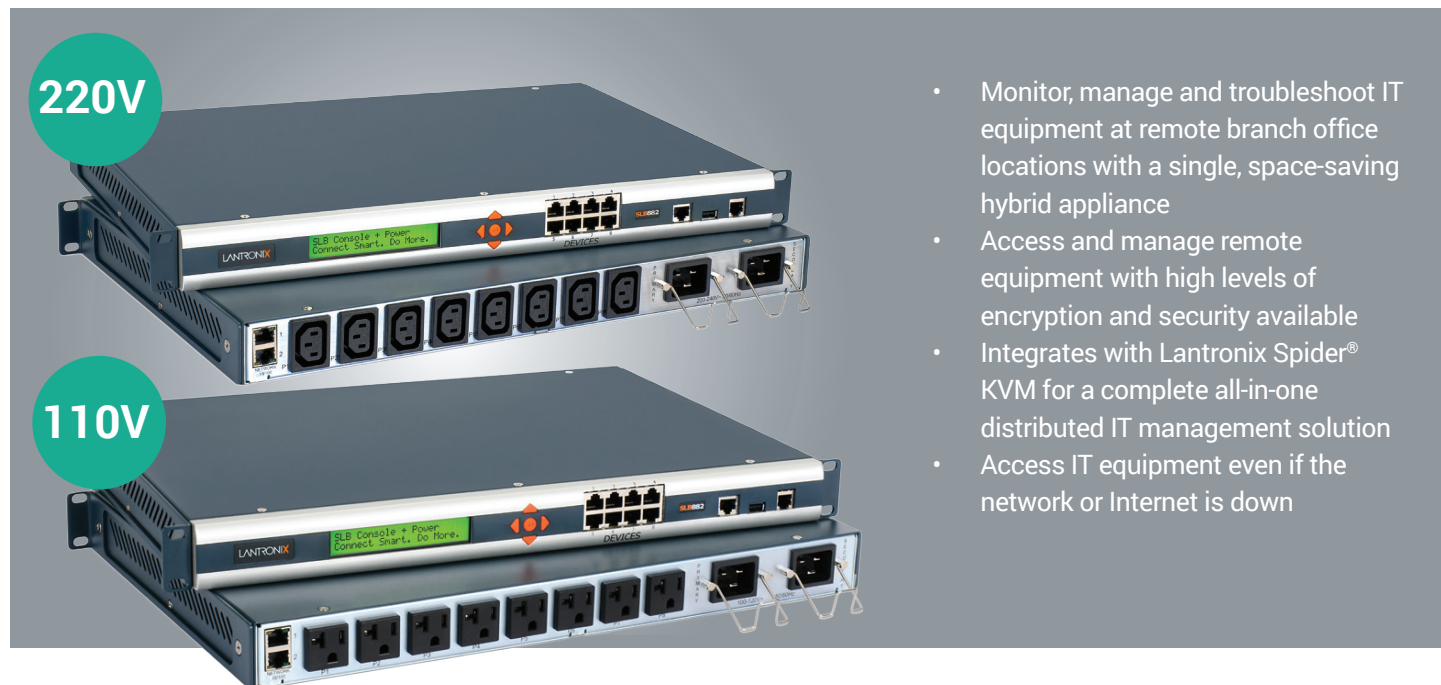
Ports	Power Supply	Part Number
8	Single AC Supply	SLC80081201S
8	Dual AC Supply	SLC80082201S
16	Single AC Supply	SLC80161201S
16	Dual AC Supply	SLC80162201S
32	Single AC Supply	SLC80321201S
32	Dual AC Supply	SLC80322201S
48	Single AC Supply	SLC80481201S
48	Dual AC Supply	SLC80482201S

Accessories	Part Number	Description
FIELD REPLACEABLE SLC 8000 MODULES		
Device Port Module	FRRJ451601	16 Device Port RJ45 I/O Module
Power Supply Module	FR1ACPS01	100-240 VAC, Single Supply Module
Power Supply Module	FR2ACPS01	100-240 VAC, Dual Supply Module
SUPPLEMENTAL PRODUCTS FOR SLC 8000		
Internal Modem	56KINTMODEM-01	56K v.92 Internal Modem - for dial-up out-of-band connectivity
PremierWave XC HSPA+	PXC2102H2-01-S	3.5G cellular out-of-band connectivity intelligent gateway (Wireless data plan sold separately)
PremierWave XN	PXN21002-01UE/J	802.11a/b/g/n Dual Band Wi-Fi Device Server



Lantronix® SLB™ Branch Office Manager

Out-of-Band Management of Remote Branch Office IT Assets



- Monitor, manage and troubleshoot IT equipment at remote branch office locations with a single, space-saving hybrid appliance
- Access and manage remote equipment with high levels of encryption and security available
- Integrates with Lantronix Spider® KVM for a complete all-in-one distributed IT management solution
- Access IT equipment even if the network or Internet is down

Responding to network issues can be costly in terms of time, money and manpower. From servers, routers, switches, firewalls, VPNs, PBX UPS systems and more, remote branch offices often lack on-site system administrators to manage their equipment portfolio. This deficit can prolong system outages due to excessive amounts of time spent waiting for help from corporate technical support or third party consultants.

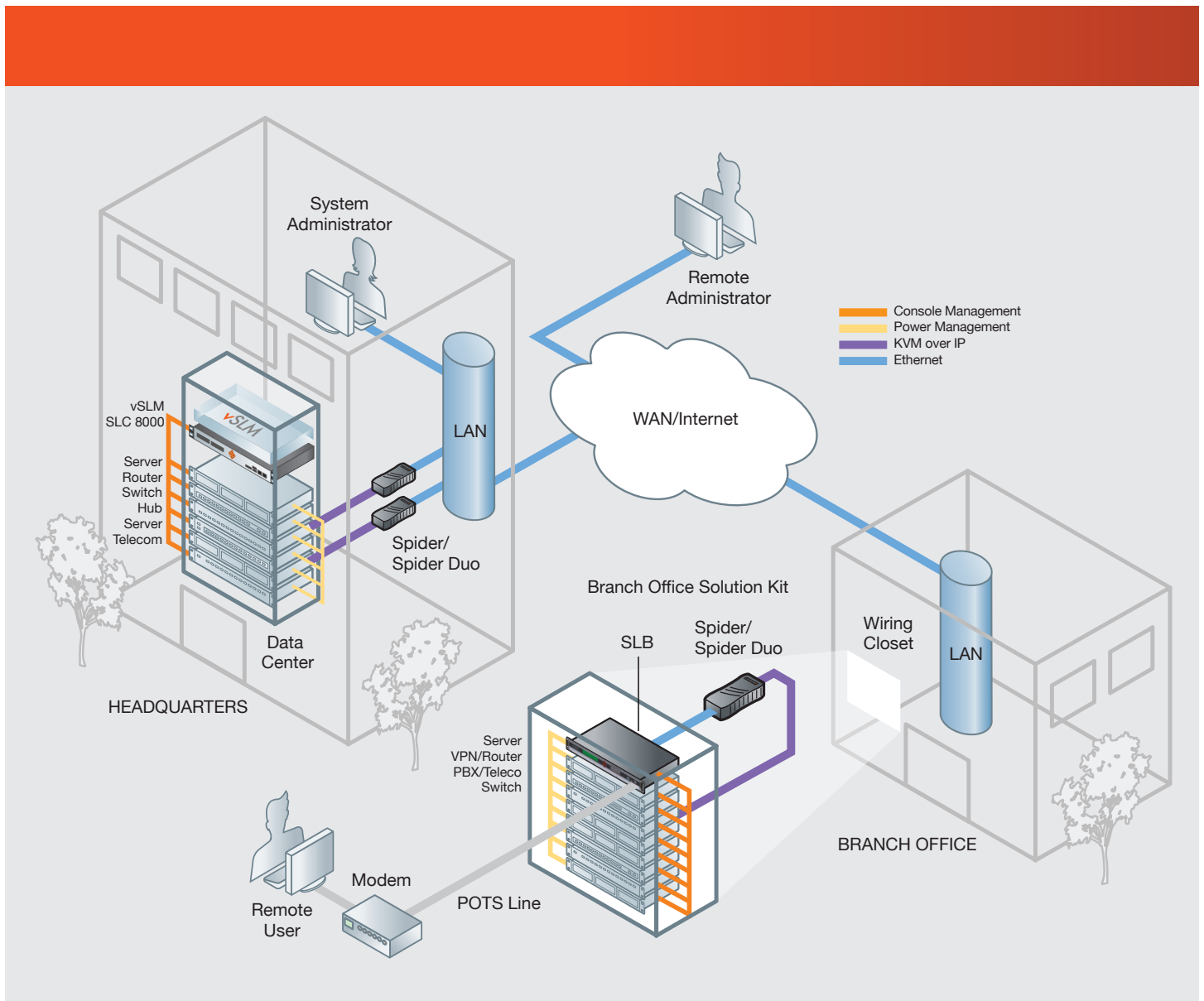
The Lantronix® SLB™ Branch Office Manager is ideal for system administrators looking to remotely manage a handful of branch office IT equipment. With proven applications in a variety of industries such as banking, finance, education and retail, the SLB appliance provides real-time visibility and access to distributed networks of IT equipment quickly and securely.

Combining Console and Power Management

Combining the power of an eight port console manager with eight power ports, the SLB delivers both secure remote access and power cycling capabilities that allow centralized IT admins to quickly manage equipment in branch offices and troubleshoot issues in real time. Its eight RJ45 serial ports enable console connectivity, which can be remotely accessed and monitored via web-browser and/or command line interface. Eight power ports provide the ability to control power individually and dual AC inlets allow for power redundancy and automatic failover.

Key Features:

- Automatic power source switchover. SLB monitors both AC inputs and will transfer power to secondary power source if primary power is lost
- Per outlet current measurement for energy monitoring
- Front LCD and keypad allows for quick network setup and easy deployment
- Provides high levels of encryption and security to ensure data assets are protected
- Centralized management integration with Lantronix vSLM management software



AC Voltage (50-60 Hz)	Part Number	Power Outlets (Total Switched Power)	Power Input	Built-in 56K V.92 Modem	Per Port Current Meter	Included Power Cords	RoHS Compliant
100-120 VAC	SLB882KIT-15P	(8) NEMA 5-15R, 16A Max per Outlet, 16A Total	(2) IEC60320/C20, 16A Max (20A Branch Circuit)	X	X	(2) IEC60320/C19 to NEMA 5-15P (15A)	X
	SLB882KIT-20P	(8) NEMA 5-20R, 16A Max per Outlet, 16A Total	(2) IEC60320/C20, 16A Max (20A Branch Circuit)	X	X	(2) IEC60320/C19 to NEMA 5-20P (20A)	X
200-240 VAC	SLB8824KIT-EU	(8) IEC60320/C20/C13, 10A Max per Outlet, 16A Total	(2) IEC60320/C20, 16A Max (20A Branch Circuit)	X	X	(2) IEC60320/C19 to Schuko (EU), (2) IEC60320/C19 to BS1363 (UK)	X
	SLB8824KIT-AP	(8) IEC60320/C20/C13, 10A Max per Outlet, 16A Total	(2) IEC60320/C20, 16A Max (20A Branch Circuit)	X	X	(2) IEC60320/C19 to AS/NZS 3112 (AU/NZ), (2) IEC60320/C19 to CHINA/GB (CN)	X
	SLB8824KIT-WW	(8) IEC60320/C13, 10A Max per Outlet, 16A Total	(2) IEC60320/C20, 16A Max (20A Branch Circuit) Built-in 56K V.92 Modem	X	X	(1) IEC60320/C19 to Schuko (EU) (1) IEC60320/C19 to BS1363 (UK) (1) IEC60320/C19 to AS/NZS 3112 (AU/NZ) (1) IEC60320/C19 to CHINA/GB (CN)	X

Lantronix® vSLM™

Simplify Management of Your Entire IT Infrastructure



- VMware® compatible
- Consolidate management of IT infrastructure
- Maintain a secure central point of access to all equipment
- Reduce troubleshooting and repair time
- Discover devices on local or remote subnet
- Minimize total cost of ownership and administrative resources
- Maximize equipment uptime

Due to the demands of modern day business, network infrastructure continues to grow along with the number of “out-of-band” infrastructure (OOBI) management devices. The Lantronix® vSLM™ Secure Management Software is a multi-platform management solution that seamlessly integrates growing IT infrastructures connected by console servers, KVMs, and remote power managers. Through a centralized point of access and common interface, vSLM gives administrators quick and easy access to equipment anywhere in the enterprise in just a few mouse clicks.

Consolidated Access and Authentication

The vSLM software simplifies administration by offering multi-platform client access through a standard web browser with clear views of out-of-band infrastructure (OOBI) devices and attached equipment. Since user account information is maintained in one place, there is no need for remembering separate usernames or passwords for each device. Users can be remotely authenticated using LDAP, RADIUS, NIS, Kerberos, and TACACS+. yup

Reduced Operating Costs

With consolidated remote access, network administrators can streamline overall operations and maintenance costs. Problem

equipment can be quickly isolated and accessed to increase productivity. Additionally, automated firmware updates increase equipment return on investment (ROI) by reducing time and labor.

Simplified and Robust Security

The vSLM software features strong 128-bit encryption (SSL/SSH) that ensures compliance with established corporate security policies. Administrators and OOBI devices are protected by well-defined access, especially when access is required outside a firewall or NAT-based router. Specified credentials designate access rights to individual machines and record detailed user audit logs for enhanced monitoring of network activity. Dual Ethernet adapters provide connection to devices on the network, while remote users connect through another.

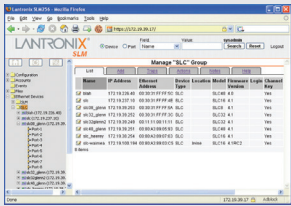
Advanced Feature Set

Equipped with Auto Discovery, the vSLM software quickly finds device and port assignments, eliminating the need for manual configuration. Auto Discovery supports Lantronix Discovery Protocol (LDP) for the Lantronix SLC 8000 console manager and SNMP for all other devices. All console messages, including inadvertent configuration changes, are permanently stored on the internal hard drive and can be accessed through a web interface.



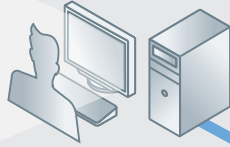
Part Number	Description	RoHS Compliant
VSLM	Virtual Secure Lantronix Management Appliance License	X

Web Browser



Unified view of all out-of-band
Remote Management Technologies
Serial Consoles, KVM and AC Power

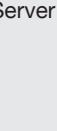
System Administrator



Ethernet



Lab Server



Administration Server

Server
Server
Server
Server
Server

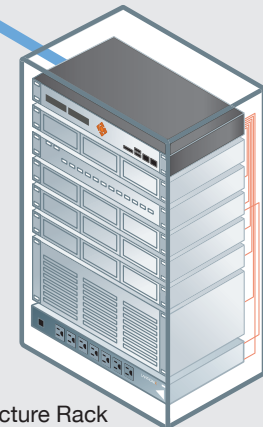
Department Server Rack

WAN/Internet

Email Server

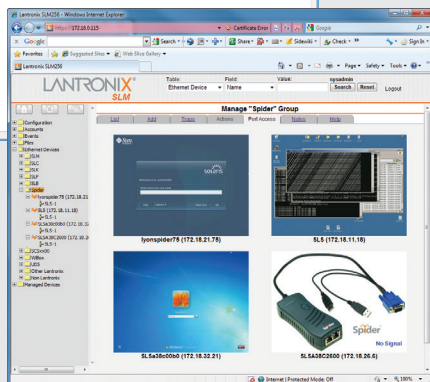
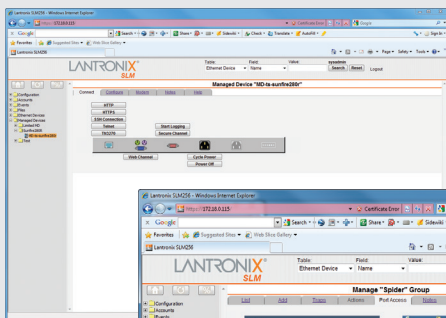
Spiders

Main Infrastructure Rack

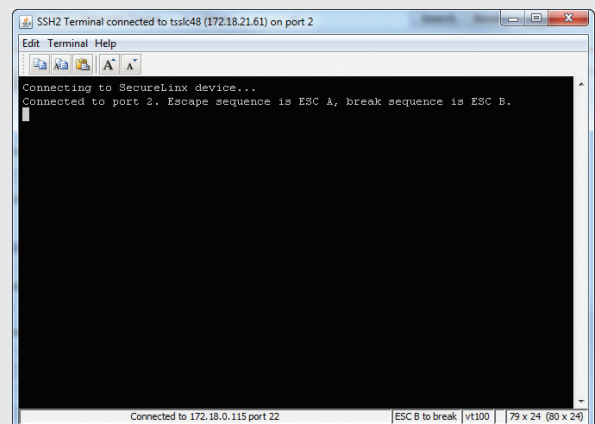


SLC 8000
Router
Switch
Hub
Server
Server
Telecom
Equipment

The vSLM simplifies management of large network/IT infrastructure while improving security. Additionally, the vSLM dramatically reduces the time and labor required to administer the network and equipment assets. The SLM/vSLM offers the most complete secure remote data center management solution available today!

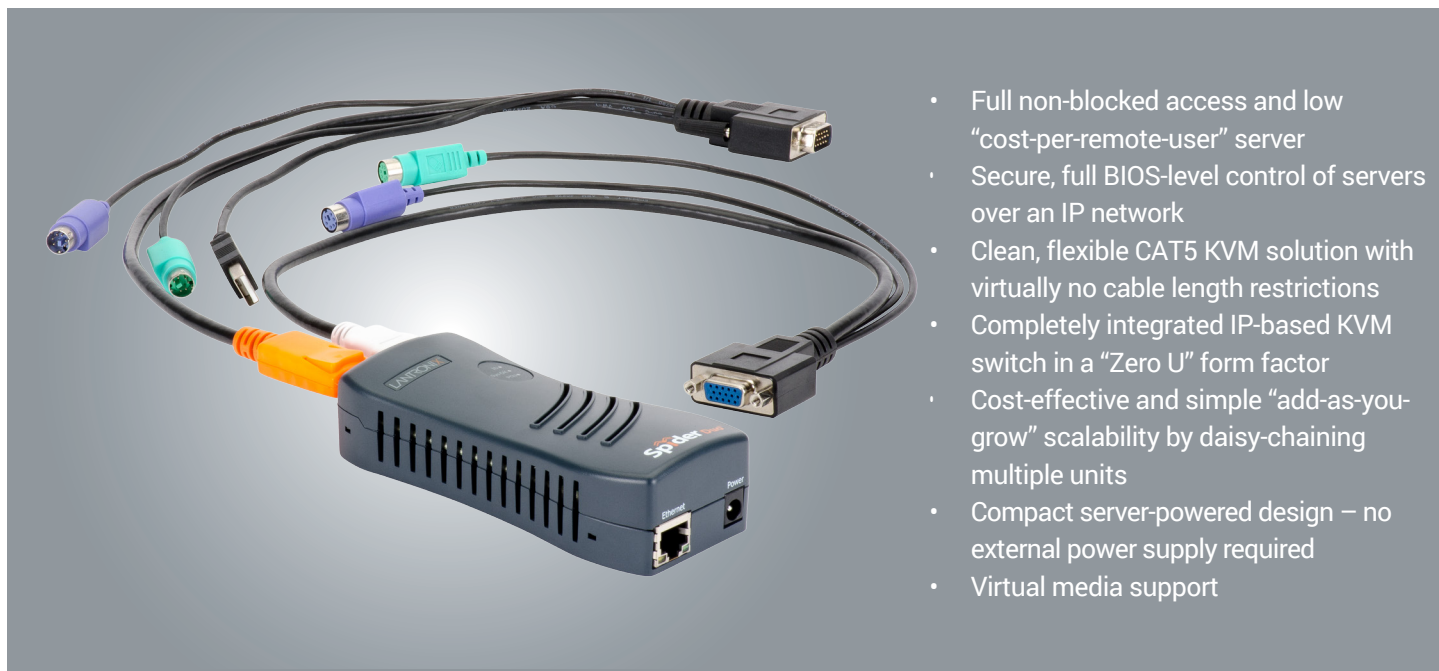


The vSLM integrates various managed device interfaces (console port, power outlet, KVM port) into a consolidated view for simplified access and control of your servers and IT infrastructure equipment.



Lantronix Spider® and Spider Duo® KVM-over-IP

Secure KVM Access and Control of Servers and PCs as if You were Sitting Right There



- Full non-blocked access and low "cost-per-remote-user" server
- Secure, full BIOS-level control of servers over an IP network
- Clean, flexible CAT5 KVM solution with virtually no cable length restrictions
- Completely integrated IP-based KVM switch in a "Zero U" form factor
- Cost-effective and simple "add-as-you-grow" scalability by daisy-chaining multiple units
- Compact server-powered design – no external power supply required
- Virtual media support

A "zero footprint" design, weighing only ~6 oz., Lantronix Spider can be cable-supported directly from the server.

The Lantronix® Spider® KVM-over-IP computer networking solutions provide secure remote one-to-one keyboard, video and mouse management of servers and PCs over the enterprise network. With compact "zero footprint" form factors, the Lantronix Spider and Spider Duo products deliver flexible, scalable and affordable CAT5-based remote access and management suitable for everything from high-density data centers to test labs.

With the Lantronix Spider, you can add remote IP users one server port at a time, rather than adding another switch that provides costly, pre-defined multiples. Also, there is no single point of failure with the Lantronix Spider deployments. If a unit is disabled, you lose access to just one server, and the switch is easily replaced.

Lantronix Spider®

The Lantronix Spider KVM-over-IP switch eliminates cable-length restrictions inherent with computer interface modules (CIMs) and current CAT5 KVM switches. Whether servers or PCs are across the

room or across the globe, administrators have non-intrusive access to mission-critical IT assets regardless of how many users require similar privileges. In other words, administrators are not "locked into" a fixed number of remote IP users and adding more can be done one server port at a time.

Lantronix® Spider Duo™

The Lantronix® Spider Duo™ KVM-over-IP switch includes integrated Virtual Media, which allows users to transfer files, perform upgrades, install patches, redirect local drives and perform full system upgrades via ISO files. Also, the Spider Duo is equipped with optional single port PCU (power control unit), which can initiate system reboots over the network. This feature creates more reliable connections to servers located in data centers, kiosks, regional offices, campuses, ATMs, Point-of-sale (POS), training centers, or test and development labs.



Part Number	Description	RoHS Compliant
SLS200USB0-01	Spider SLS200, 1 Port Remote KVM-over-IP with USB Connectors; 21" VGA cable	X
SLS200PS20-01	Spider SLS200, 1 Port Remote KVM-over-IP with PS/2 and USB Connectors; 21" VGA cable	X
SLS200USBX0-01	Spider SLS200, 1 Port Remote KVM-over-IP with USB Connectors; 58" VGA cable	X
SLS200PS2X0-01	Spider SLS200, 1 Port Remote KVM-over-IP with PS/2 and USB Connectors; 58" VGA cable	X
SLSLP400USB-01	Spider Duo 1 Port Local + Remote KVM-over-IP with USB Connectors; 21.6" VGA cables	X
SLSLP400PS2-01	Spider Duo 1 Port Local + Remote KVM-over-IP with PS/2 and USB Connectors; 21.6" VGA cables	X
Accessories	Description	
PCU100-01	Single port power control unit, 100-240VAC, 50/60Hz, 10A (Includes IEC320/C13 to NEMA inlet and IEC320/C14 to IEC320/C13 outlet power cables) (SpiderDuo compatible only)	X



Remotely manage power with the optional power control unit (SpiderDuo only)

PremierWave® XC HSPA+ 3.5G Intelligent Gateway

Eliminate Costly Downtime with Cellular Out-of-Band Management



- Remote connectivity over cellular to manage any device
- SMS: Shoulder tap, relay control, event notification, and tunneling
- Dual network connectivity (wired Ethernet and Cellular) for flexibility and redundancy
- Unique design for quick and easy connectivity to virtually any device with a serial port
- Extended temperature range for industrial applications

The Lantronix® PremierWave® XC HSPA+ intelligent gateway is an industrial grade 3.5G cellular solution offering Penta-band HSPA+ performance, network redundancy, and enterprise-level security for mission critical applications, time sensitive event tracking, and global M2M connectivity.

Cellular Out-Of-Band Management

During key moments of network loss, remote access to the system could mean the difference between an expensive network failure and a brief speed bump in data center operations. The PremierWave XC HSPA+ establishes network connectivity through 3.5 G cellular for out-of-band access to any serial device linked to the network. This solution allows administrators to respond to network outages and maintain system uptime immediately. This intelligent gateway features the industry-proven Lantronix device server application suite and enterprise level security, (SSL, SSH, AES) allowing safe and secure remote access and management from practically anywhere.

Flexible & Robust

This PremierWave XC HSPA+ is contained in a compact industrial-grade IP30 rated housing. It is ideal for deployment in distant locations either as a primary wireless connectivity method or as a backup when Ethernet connectivity fails.

Customizable & Versatile M2M Connectivity Solution

Featuring three primary connectivity modes (Ethernet-to-Cellular Routing, Serial-to-Cellular Tunneling, and Serial-to-Ethernet Tunneling), customizable event tracking/notification, and multiple configuration modes (Web browser, CLI, and XML), the PremierWave XC HSPA+ intelligent gateway is an extremely versatile, secure, and easy to manage wireless solution for connecting your Ethernet and serial machines.

- 1 10/100 Port, 2 Serial Ports, 2 Digital Inputs, 1 Relay Output, 1 USB Port
- 5-Year Limited Warranty
- Quad-band GSM/GPRS/EDGE
- Ethernet-to-Cellular Failover/Failback
- Ethernet-to-Cellular Routing
- Serial-to-Cellular Tunneling
- Serial-to-Ethernet Tunneling
- Dual network connectivity offers flexibility and redundancy
- Simple device set-up, configuration and monitoring with powerful, industry-standard management tools (Web, CLI, XML)



RoHS Compliant

Part Number	Description	
PXC2102H2-01-S	Intelligent Gateway and Application Server, 2 Serial Ports, 2 Digital Inputs, Relay Output, USB, 10/100Base-T, 2 Antennas, Industrial Temperature, Universal Power Supply with Regional Adapters	X
PWX2102H2-01-WYTM-S	PremierWave XC / Wyless T-Mobile Network Service (USA only) Bundle, PremierWave XC HSPA+ Intelligent Gateway, T-Mobile Network SIM, Free 30-Day Network Service Trial c/o Wyless, 2 Serial Ports, 2 Digital Inputs, Relay Output, USB, 10/100Base-T, 2 Antennas, Industrial Temperature, Universal Power Supply with Regional Adapters**	X

**Wireless data applications and managed services for M2M communications (the "Services") are provided by Wyless, Inc. ("Wyless"). Coverage and availability of the Services may not be available in all areas. Lantronix, Inc. is not responsible for the quality, availability or non-availability of the Services, or for any transmission errors, corruption of data, or the security of data during transmission via public telecommunications facilities when utilizing the Services. Purchaser is responsible for payment to Wyless for all charges incurred for use of the Services beyond the 30-day free trial period.

SGX 5150 Intelligent IoT Device Gateway

A High-Performance Wi-Fi Solution for Out-of-Band Management of IT Infrastructure



- Easily configure and connect to the enterprise network, out-of-the-box
- Unique Device ID feature allows you to make your device visible to authorized users
- Linux SDK and Python runtime services allow quick development and deployment of custom applications
- Designed with the high quality materials for reliability in industrial environments
- Wi-Fi® Alliance and USB Certification*

Serving as both an IoT device gateway and an out-of-band IT infrastructure management solution, the versatile SGX 5150 device provides high-performance wireless network connectivity to enterprise out-of-band networks. The SGX 5150 features robust enterprise-level security, intuitive system diagnostics, and establishes reliable access to communicate critical device information regarding the health of your connected infrastructure.

Built-in essential management applications deliver full networking, extensive security, industry-leading device configuration management and system diagnostics.

The SGX 5150 provides multiple interface options for connecting virtually any asset with single or dual RS-232/485 serial ports, USB 2.0 with host and device modes and Ethernet interfaces. The SGX 5150 is an ideal solution for organizations seeking compatibility with multiple devices and product lines.

*Available in future F/W release

Part Number	Description
SGX515000US	SGX 5150 Wireless IoT Gateway, 802.11a/b/g/n/ac, USB, 10/100 Ethernet, US
SGX5150102US	SGX 5150 Wireless IoT Gateway, 802.11a/b/g/n/ac, 1xRS232 (RJ45), USB, 10/100 Ethernet, US
SGX5150103US	SGX 5150 Wireless IoT Gateway, 802.11a/b/g/n/ac, 1xRS232 (RJ45), USB, 10/100 Ethernet, PoE, US
SGX5150202US	SGX 5150 Wireless IoT Gateway, 802.11a/b/g/n/ac, 2xRS232 (RJ45), USB, 10/100 Ethernet, US
SGX5150205US	SGX 5150 Wireless IoT Gateway, 802.11a/b/g/n/ac, 2xRS485 (RJ45), USB, 10/100 Ethernet, PoE, US
SGX515000ES	SGX 5150 Wireless IoT Gateway, 802.11a/b/g/n/ac, USB, 10/100 Ethernet, EU
SGX5150102ES	SGX 5150 Wireless IoT Gateway, 802.11a/b/g/n/ac, 1xRS232 (RJ45), USB, 10/100 Ethernet, EU
SGX5150103ES	SGX 5150 Wireless IoT Gateway, 802.11a/b/g/n/ac, 1xRS232 (RJ45), USB, 10/100 Ethernet, PoE, EU
SGX5150202ES	SGX 5150 Wireless IoT Gateway, 802.11a/b/g/n/ac, 2xRS232 (RJ45), USB, 10/100 Ethernet, EU
SGX5150205ES	SGX 5150 Wireless IoT Gateway, 802.11a/b/g/n/ac, 2xRS485 (RJ45), USB, 10/100 Ethernet, PoE, EU
SGX515000JS	SGX 5150 Wireless IoT Gateway, 802.11a/b/g/n/ac, USB, 10/100 Ethernet, Japan
SGX5150102JS	SGX 5150 Wireless IoT Gateway, 802.11a/b/g/n/ac, 1xRS232 (RJ45), USB, 10/100 Ethernet, Japan
SGX5150103JS	SGX 5150 Wireless IoT Gateway, 802.11a/b/g/n/ac, 1xRS232 (RJ45), USB, 10/100 Ethernet, PoE, Japan
SGX5150202JS	SGX 5150 Wireless IoT Gateway, 802.11a/b/g/n/ac, 2xRS232 (RJ45), USB, 10/100 Ethernet, Japan
SGX5150205JS	SGX 5150 Wireless IoT Gateway, 802.11a/b/g/n/ac, 2xRS485 (RJ45), USB, 10/100 Ethernet, PoE, Japan

Accessories	Description
SGX5150BKT	SGX 5150 Mounting Bracket
520-154-R	Power Supply, Wall Cube, 12VDC 10W, 2.1mm Barrel Connector, 4 AC Plugs, Efficiency Level VI, PSE, RoHS
520-141-R	Power Supply, Desktop, 60601-1, 100-240VAC, 12VDC 10W, 2.1mm Barrel Connector, 150cm Cord, C14 AC Input, 0-40C, Efficiency Level V, RoHS
500-247-R	Cable, USB Type C to USB-A Male 2.0, 1000mm, Black, RoHS
500-110-R	Cable, CAT5E Ethernet, 10'
500-101	Cable, RJ45 to DB9M DTE, 6' for Connection to a DB9F DCE Device
200.2071	Adapter, RJ45 to DB9M DTE, for Connection to a DB9F DCE Device

Unmatched Technical Support



Our support staff leverages their deep product knowledge and decades of customer service experience to deliver individualized support for a variety of industries.

Access our online support forum and FAQs at www.lantronix.com/support.

Lantronix Technical Support Offers:

Free phone support with minimal hold time:

North America

6 a.m. – 5:00 p.m. PST, Monday through Friday
(800) 422-7044

Europe, Middle East, Africa

+31 (0) 20 77 14 424

+31 (0) 76 52 36 740

- Virtual on-site support via Live Assist
- Online chat
- Web-based video configuration tutorials
- Online knowledge base and FAQs
- Extended services:
 - Extended warranty
 - 24x7 telephone technical support
 - Advanced replacement

Give us a call or visit lantronix.com and you'll find out why we're so proud of our support team and the services they provide.

Extended Warranty & Support Program

Lantronix's extended support service program is a combination of valuable services that extend warranty periods, improve your technical support, and provide better protection for your vital network equipment and data center assets. Depending on your needs, our unmatched customer support can extend the life and warranty coverage of your mission-critical equipment. The services listed are available to clients in the United States and Canada. Extended warranties are also offered worldwide.

Extended Warranty

- Extends warranty service and support coverage
- 6am - 5pm Pacific Time Monday-Friday toll-free technical support for US (domestic) and Canada
- 24/7 on-line knowledge base

Advanced Replacement

- In the unlikely event of product failure, provides replacement equipment with minimal down-time. Replacements shipped overnight where available.

24x7 Technical Support

- Get special 24/7, toll-free support from the Lantronix team of expert technical support representatives.

Industry-Leading Quality



At Lantronix, we believe that our quality differentiates us as much from our competition as our innovative products. Reflecting our unwavering commitment to quality, reliability and environmentally-sound manufacturing processes, we are ISO 9001:2008 registered.

ISO 9001:2008 is a business process tool that helps companies manage their operations in a controlled manner, resulting in the production of high-quality products. Lantronix is committed to building the highest-quality products with environmentally-friendly standards.

For information on our "green roadmap" and plans for meeting RoHS and WEEE environmental directives, please visit www.lantronix.com/about/rohs.html.



When you choose Lantronix, you get the peace of mind that comes from partnering with a highly experienced technical innovator with a commitment to the highest quality, environmental and business principles.



CORPORATE HEADQUARTERS

Americas

☎ (800) 422-7055
✉ Email: sales@lantronix.com

Europe/Middle East/Africa (EMEA)

☎ +31 (0)76 52 36 744
✉ Email: EMEA@lantronix.com

Japan

☎ +81-3-3273-8850
✉ Email: japan_sales@lantronix.com

Asia/Pacific

☎ + (852) 3428 2338
✉ Email: asiapacific_sales@lantronix.com

China

☎ +86 21-6237-8868
✉ Email: Shanghai@lantronix.com

India

☎ +91 994-551-2488
✉ Email: sales_india@lantronix.com

www.lantronix.com