

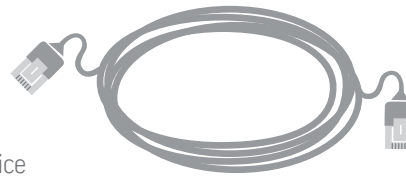


EDS-MD® Medical Device Server Quick Start Guide

WHAT'S IN THE BOX



EDS-MD®
Medical Device
Server



RJ45 CAT5E Ethernet Cable



RJ45 Loopback Adapter

1 INSTALL DEVICEINSTALLER™

1. Download the latest version of DeviceInstaller from <http://www.lantronix.com/downloads>
2. Run the executable to start the installation process on the computer being used to configure EDS-MD.

3. Respond to the installation wizard prompts.
4. When prompted to select an installation type, select **Typical**.
Note: For more information about DeviceInstaller, see the Windows DeviceInstaller Help.

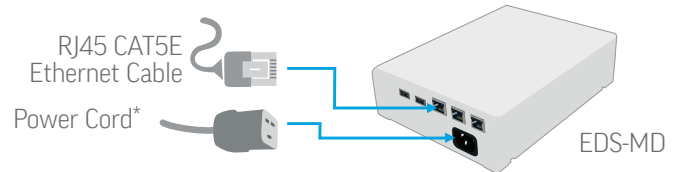
2 QUICK CONNECT

If your PC and EDS-MD can be connected to a network with a DHCP server:

1. Connect an Ethernet cable to a port on the switch and to Ethernet Main 1 on the EDS-MD.
2. Power up the unit with the appropriate regional power cord.*

If you are unable to connect the PC and EDS-MD to a network:

1. Use an Ethernet cable to connect the computer directly to Ethernet Main 1 on the EDS-MD.
2. Power up the unit with the appropriate regional power cord.*



* Power cords sold separately

3 IP ADDRESS CONFIGURATION

1. Run DeviceInstaller
Click: Start > Programs > Lantronix > DeviceInstaller > DeviceInstaller.
2. Click the **Search** icon and select the unit from the list of Lantronix device servers on the local network.
3. Click the **Assign IP** icon.
4. If prompted, enter the MAC address (on the product label) and click **Next**.
5. Select **Assign a specific IP** address and click **Next**.
6. Enter the **IP address**. The **Subnet mask** displays automatically based on the IP address. If desired, you may change it. On a local network, you can leave the **Default gate way** blank (all zeros). Click **Next**.

7. Click the **Assign** button and wait several seconds until a confirmation message displays. Click **Finish**.

If DeviceInstaller is unable to discover the EDS-MD:

- Check that the "link" light is on when the RJ45 cable is connected to the computer and EDS-MD
- In Windows Device Manager, ensure that the Ethernet adapter for the local connection is installed and working properly
- In Properties, check that the Ethernet adapter is set to obtain an IP address automatically

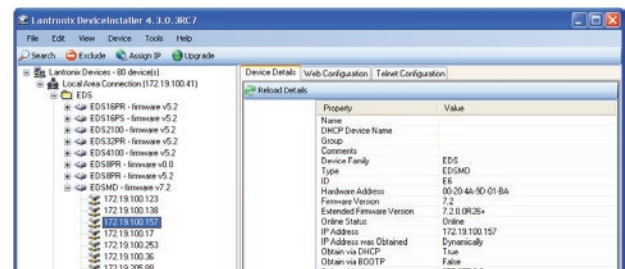
4 COMPLETE THE CONFIGURATION

To complete configuration, highlight the device from the list.

To use a web interface (Web Manager), double click the unit in the list and click the [Web Configuration](#) tab.

To use a Command Line Interface, double click the unit in the list and click the [Telnet Configuration](#) tab.

Please see the EDS-MD product User Guide and Command Reference for detailed instructions: <http://www.lantronix.com/support/downloads>



CONTACT

Technical Support

For technical support queries, visit <http://www.lantronix.com/support> or call (800) 422-7044 Monday - Friday from 6:00 a.m. - 5:00 p.m., Pacific Time, excluding holidays.

Latest Firmware

For the latest firmware downloads, visit <http://www.lantronix.com/support/downloads>

IP Address Assignment Tutorial

To view a tutorial on how to assign an IP address, visit <http://www.lantronix.com/support/tutorials>